

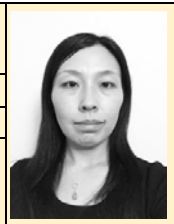
Architectural Planning and Design Principles Based on Human Behavior and Living Needs

Yukari TSUKADA

Assistant Professor | tsukaday@sendai-nct.ac.jp

Affiliated Societies | Architectural Institute of Japan, Association for Children's Environment, Japanese Research Association of After School Care

Keywords | Architectural and city planning-related (23030)
Spatial planning (22050)



Research Topics

1. Spatial planning of school, play area, and facilities for childcare
2. Social systems and built environments in Finland for human-centered design.

Research Seeds

I have studied in multidisciplinary fields such as Housing and Environmental Design in Japan and City Planning in Finland. Furthermore, I have work experience as a teacher of home economics and as an ICT promoter in learning and education at school as well as an assistant architect in city government participating in two projects: creation of a new cultural multi-building in the center of the historical city, Osaka and maintaining signboards to easy visitors' travel.

My interest is creating child-friendly environments based on research and consultation, proposing comprehensive solution to contemporary issues related to physical environment in residential areas and buildings such as educational architecture and children's spaces.

【Research Topics】

1. Study of facilities for community-based after school care using private housing. Children use neighboring spaces and facilities frequently (Fig. 1) . Concepts of community-based facilities for afterschool care were drawn up.
2. Study of playground in Finland. To design children's play areas, we analyzed the relation between physical environment and children's behavior. Children's behavior is influenced by ground materials and landscape (Fig. 2) .

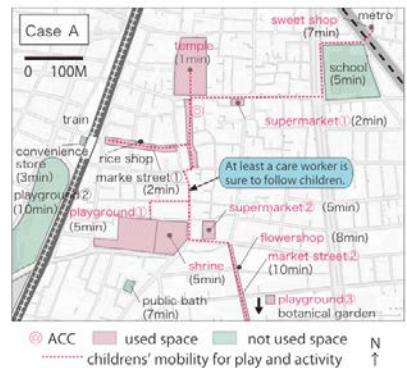


Fig. 1

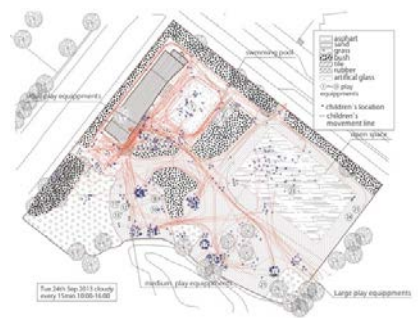


Fig. 2

Related Technology